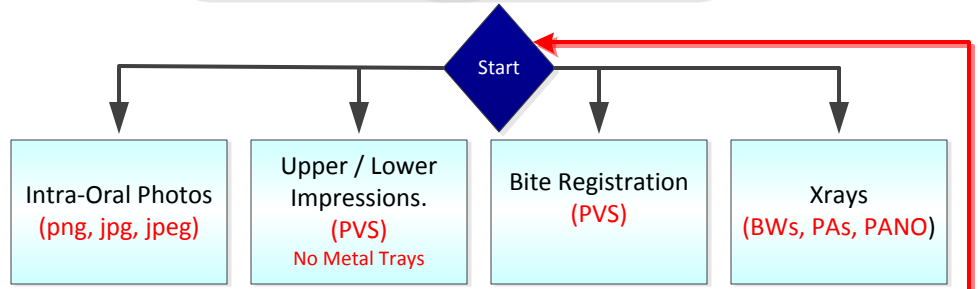


Why these items are required →

- * Photos used for cosmetic alignment and biometric analysis.
- * Bite impressions / registration /X-rays are used for occlusion & optimized 3D patient model.

All are necessary for medical legal liabilities.



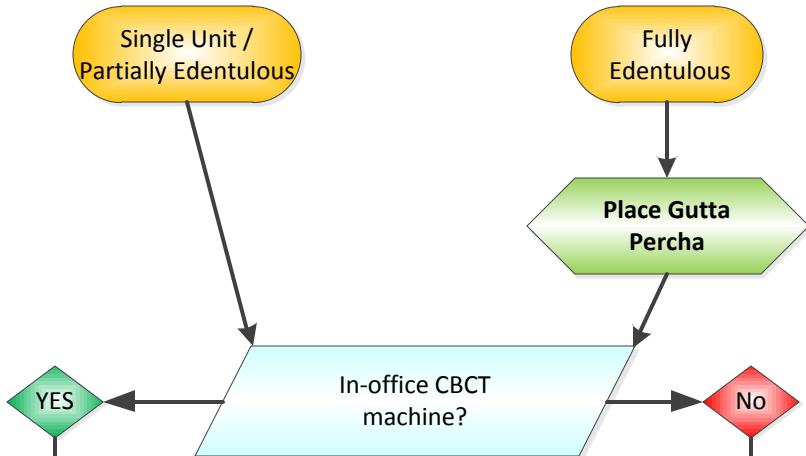
* Gutta percha quadrant placement: 4 mm below gingival line, offset to form triangle.

Lingual(3): Place one dot below the canine, one between premolars, and one between the 1st and 2nd molars.

Buccal(1): Place one dot between canine and 1st premolar.



2

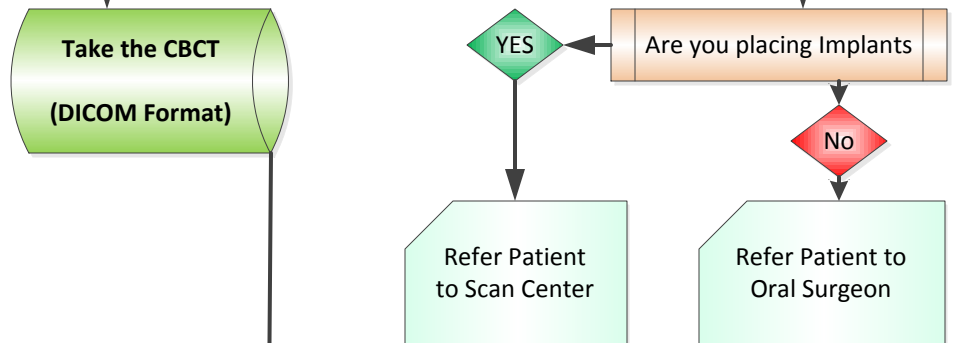


Check InPronto website for Scanning Protocols, and/or Scan Center locations.

http://www.inpronto.com/scancenter_implants.aspx?m=1

Accepted formats of CBCT scan are: DICOM 1, DICOM 2, DICOM 3.

3



Steps 1 thru 3 above are all required, complete before proceeding.

4



To submit case to InPronto:

- Create an account

Or

- Login to submit

www.inpronto.com

5

